



Integrating Mobility into Small Business

Sean Costello

IronGate Server Management & Consulting
Sean@IronGate.ca • @SeanInMotion

Implementing one or two individual iPhones or iPads is relatively simple.



But what about 5? 50? Or even 500?

(And that's even before you find out that the devices aren't all iOS-based!)



A sane integration project should start with meeting the client, identifying their true goals, and formulating a plan to get there.

Space Shuttle Program
FLIGHT DATA FILE

JSC-48000-68

Flight Plan

STS-68

(FRR Cycle Trajectory)



Mission Operations Directorate
Operations Division

Final
July 14, 1994

| EVENT | | | |
|-------------|-----------|------|-----------|
| Launch | 05:54 CDT | Thur | August 18 |
| KSC Landing | 10:36 CDT | Sun | August 28 |

National Aeronautics and
Space Administration

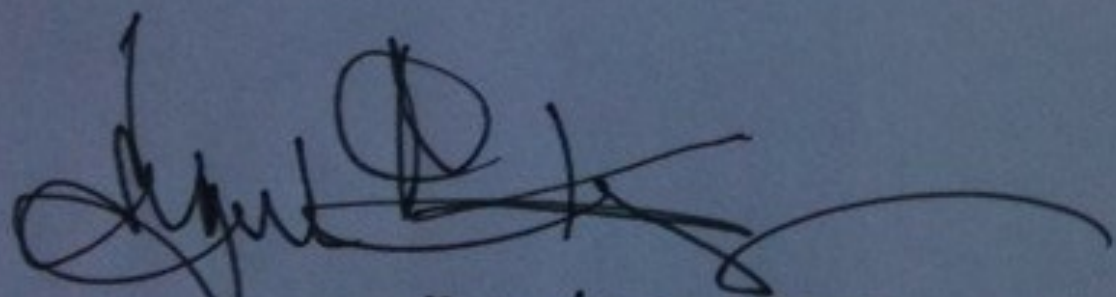
Lyndon B. Johnson Space Center
Houston, Texas





To Senn

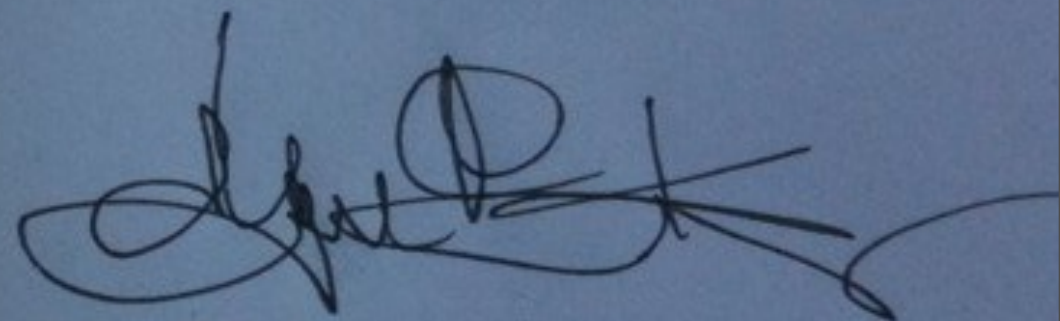
"Failure is not
an option!"


"white" flight

APOLLO 13

To Senn

Am I right?





Primary challenge: Identify tasks, requirements & restrictions



Secondary challenge: Integrating with the back-end infrastructure



Secondary challenge: Integrating with the back-end infrastructure



Secondary challenge: Integrating with the back-end infrastructure



Mac OS X Server's Built-in Services



iCal Server 3



Mail Server 3



Push Notifications



File Sharing for iPad



Profile Manager



Profile Manager

Introducing: Mobile Device Management

- Permits control over how devices are used
- Facilitates streamlined version/build management
- Provides the hook to invoke secure/remote wipes
- Some features useable with desktops & portables





Profile Manager

Web-based Administration Console

Featuring a web-based administration console, Profile Manager enables management from any modern web browser. Administrators can define profile settings for individual users, groups, devices and groups of devices. For group-based management, Profile Manager easily integrates with directory services such as Open Directory, Active Directory and LDAP.

User Portal

To simplify profile deployment Profile Manager includes a portal where users can download and install new configuration profiles for their Mac, iPad, iPhone or iPod touch. User can access this portal within a browser to manage their passcode, set their Macs boot password, or remotely lock or wipe devices that are lost or stolen.

Management Options

- Accounts
- Email, calendar, contacts
- Exchange
- LDAP, CalDAV, CardDAV
- Subscribed calendars
- VPN, Wi-Fi
- Digital Certificates
- Web Clips
- APN
- SCEP
- Proxy server
- Policies and Restrictions
- Passcode age, length, complexity
- Applications launch restrictions
- YouTube
- iTunes Music Store
- Safari
- Device features
- Camera
- Voice calling
- Encryption
- Content ratings
- Mac specific
- Directory services
- Dock settings
- Login window
- Mobility
- Software Update
- Printers
- Energy Saver
- Parental Controls

3rd Party Mobile Device Management tools

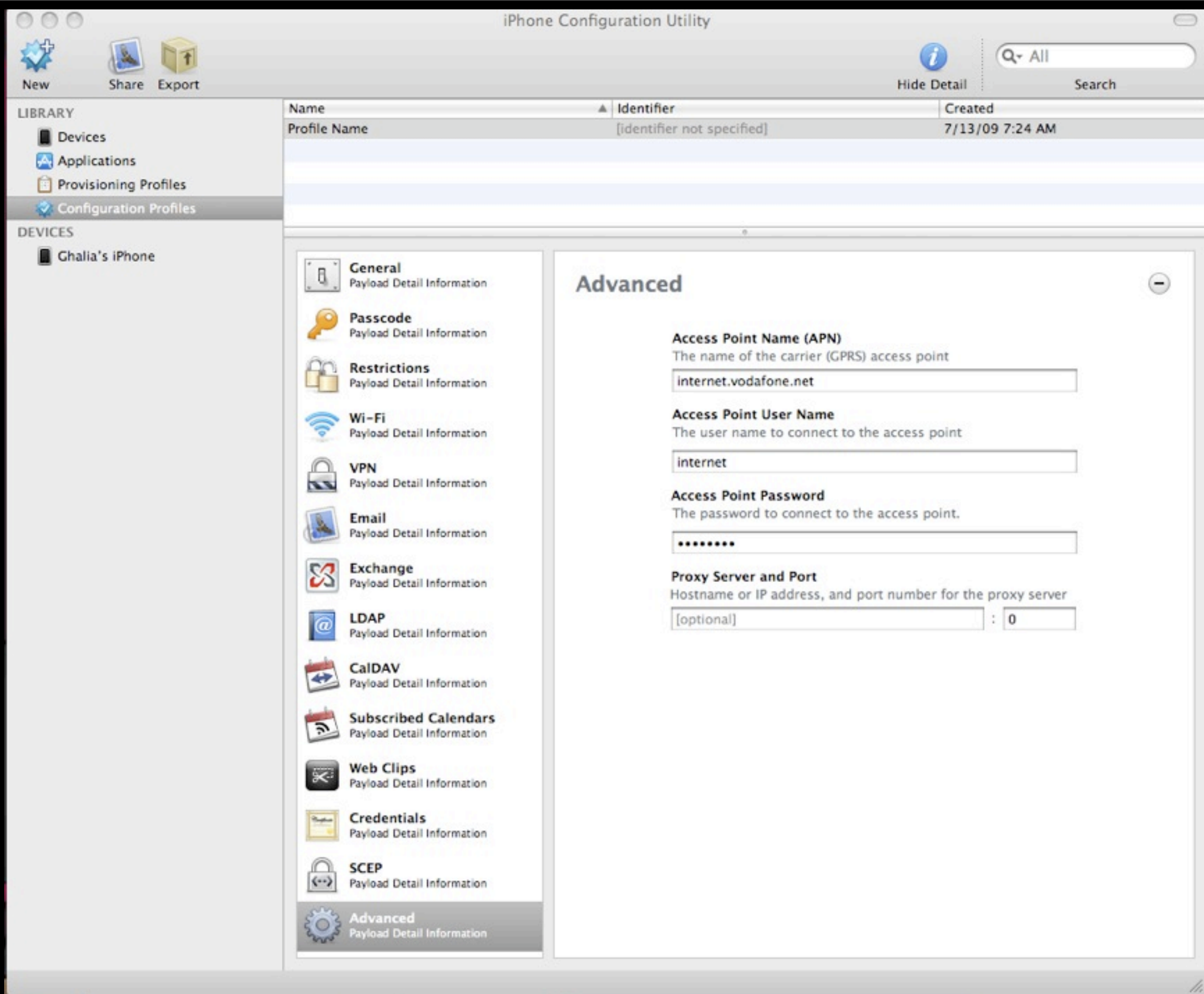


Security and Encryption concerns

- VPN and SSL protection is a must!
- Shimo, VPNTracker, IP Securitas, WiTopia, Cloak
- Beware of older, weaker standards (PPTP, WEP)

Provisioning iOS devices for effect

- Even if it's only for 5 devices, it's a rollout!
Learn a little from each time, grow as you go
- Explore & use iPhone Configuration Utility
- Note about Enterprise Developer Account...
- Once configuration profiles are built and ready, new iOS devices only need to be plugged in to be auto-configured



Add
 Share
 Export

Hide Detail
 Search

LIBRARY

- Devices
- Applications
- Provisioning Profiles
- Configuration Profiles

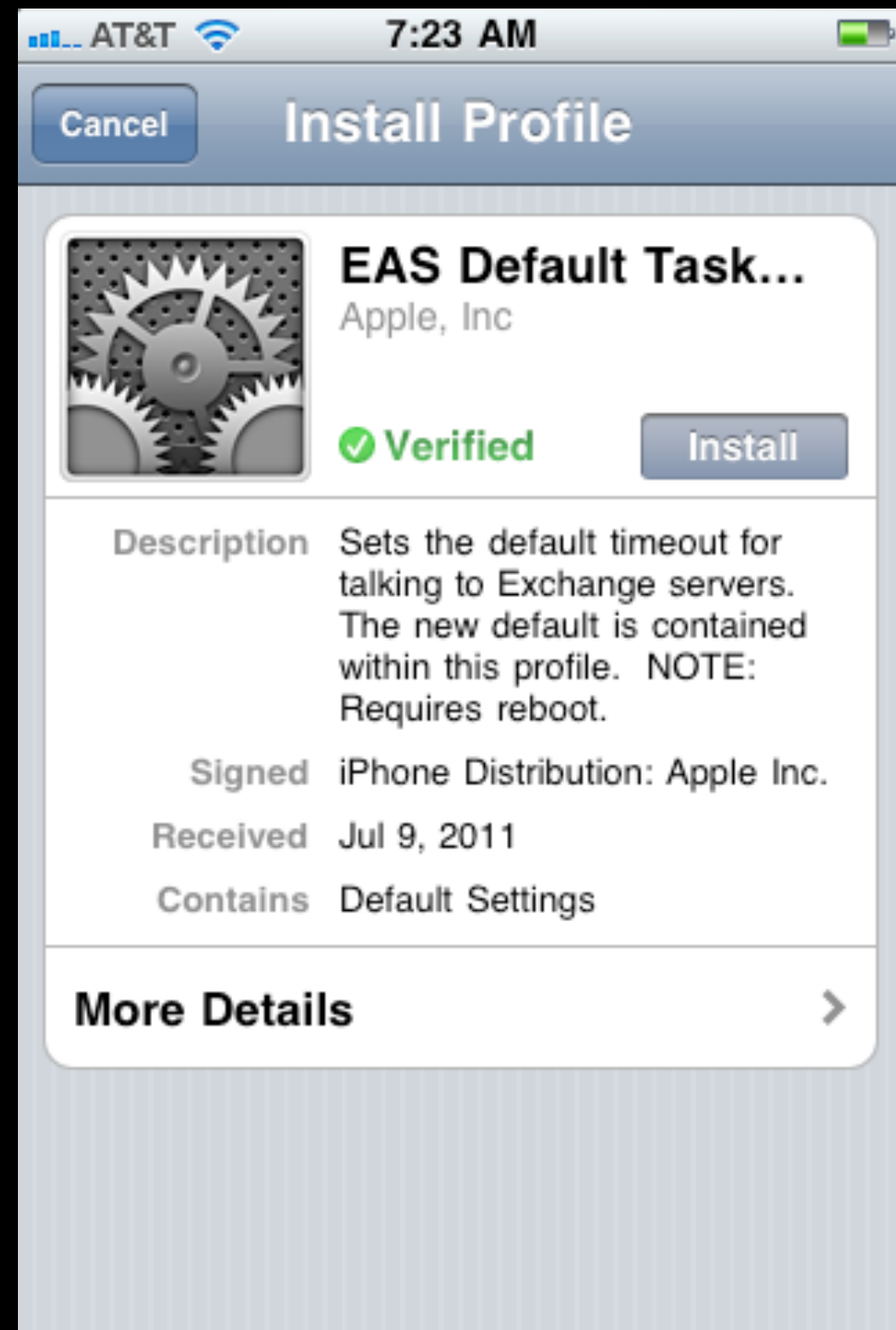
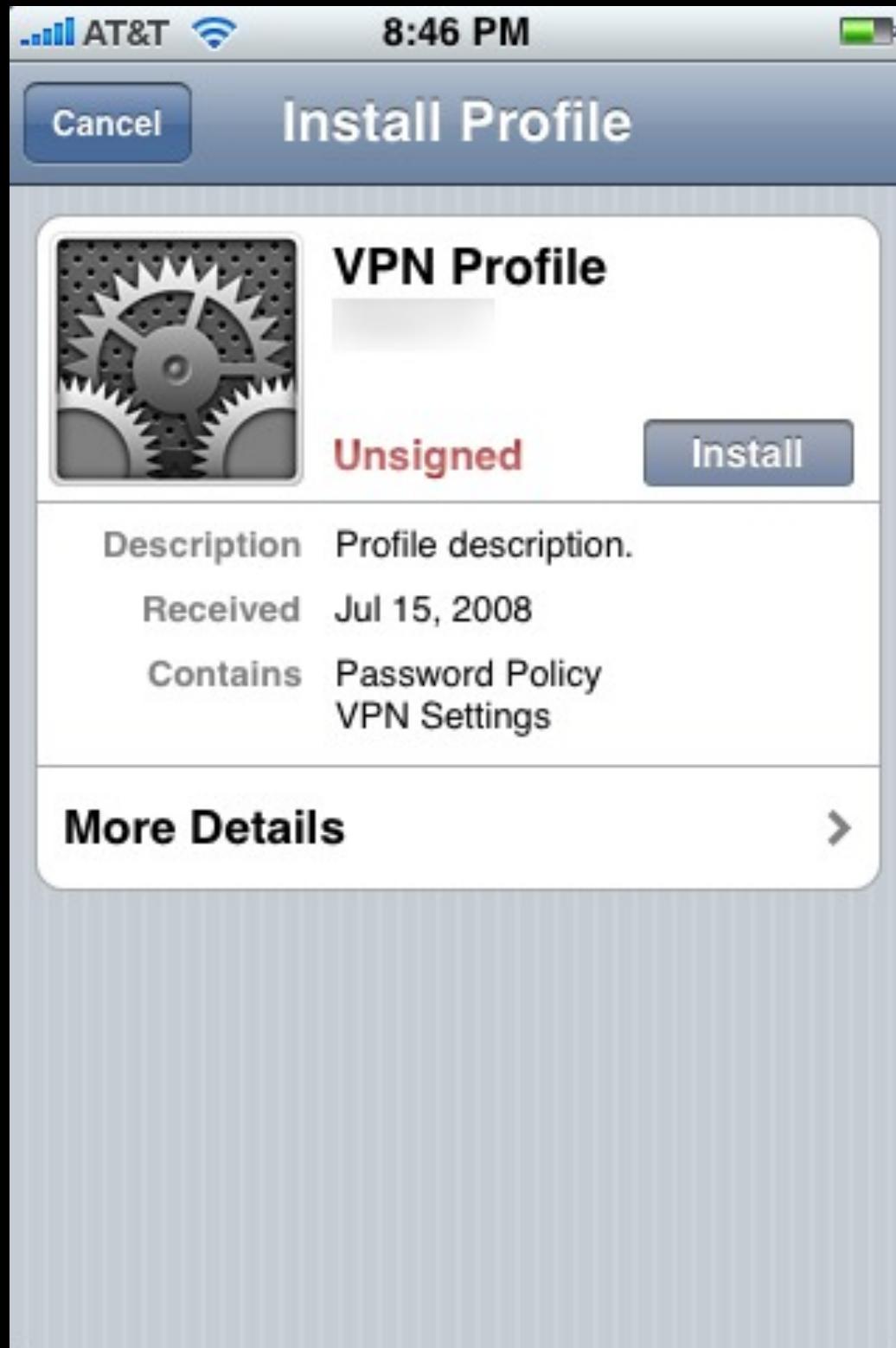
 CONNECTED DEVICES

- Knight iTouch**

Summary Provisions Applications Console

Install or remove applications

| Name | Identifier | |
|------------------|------------------------------------|-----------|
| Blip Solitaire | com.mavericksoftware.blipsolitaire | Uninstall |
| Labyrinthlite | se.codify.labyrinthlite | Uninstall |
| Instapaper | com.marcoarment.instapaper | Uninstall |
| iMmo | com.youweb.iMmo | Uninstall |
| WordPress | com.effigent.iphone.wordpress | Uninstall |
| Othello | hongtao.Othello | Uninstall |
| Matches | com.NeilDaniels.Matches | Uninstall |
| Counter | com.yourcompany.Counter | Uninstall |
| Tap Tap | com.tapulous.TapTap | Uninstall |
| Google | com.google.GoogleMobile | Uninstall |
| NetNewsWire | NetNewsWire | Uninstall |
| EasyTask | com.orionbelt.easytask | Uninstall |
| To Do | com.sadun.ToDo | Uninstall |
| Cube Runner | com.andyqua.CubeRunner | Uninstall |
| Characters | com.yourcompany.Characters | Uninstall |
| Remote | com.apple.Remote | Uninstall |
| BreakClassicLite | com.bootant.BreakClassicLite | Uninstall |
| Facebook | com.facebook.Facebook | Uninstall |
| BinaryClock | com.peterelst.binaryclock | Uninstall |
| Twitterrific | com.iconfactory.TwitterrificFree | Uninstall |



Apple Article: TS3398

Provisioning & Profile Best Practices

- Start with small groups of devices
- Create non-user and user-specific profiles
- Backup Keychains
- Backup ~/Library/MobileDevice

Distribution of Profiles

- Direct USB, E-mail, Web or Over-the-Air
- Build a timetable for larger deployments
- Profile formats: Unsigned, Signed and Encrypted
- Policy considerations: promiscuous use of wireless, network policy over 3G, loss/theft/termination actions, passcode policy, iTunes sync, ownership of device vs. contents

Questions?



Friday, July 29, 2011



Friday, July 29, 2011



Friday, July 29, 2011



